

Operating manual

Grease Separator Models FA30 / FA50 / FA80 / FA100 / FA250

Item-No.: 458-1800 / 458-1805 / 458-1810 / 458-1815 / 458-1820



Table of Contents

SCOPE OF DELIVERY	3
TECHNICAL OVERVIEW	3
SYMBOL EXPLANATIONS	4
GENERAL INSTRUCTIONS	4
SAFETY INSTRUCTIONS	4
MODE OF OPERATION	5
DEVICE INSTALLATION	5
STRUCTURE AND COMPONENTS	6
CLEANING AND AMINTENANCE	7
TAKING GREASE SEPARATOR OUT OF OPERATION / STORAGE / TRANSPORT	8
EXPLODED VIEW DRAWING	8
EXPLODED VIEW DRAWING – LEGEND	9
PACKAGING DISPOSAL	9

Dear Customer,

Congratulations on your new SARO grease separator.

The product you have purchased has been designed for commercial use in restaurants, hotels, cafés, canteens, and similar establishments. It serves to reliably separate fats and oils from wastewater in order to relieve the sewage system and comply with legal requirements.

Please read this operating manual carefully before commissioning the unit.

We wish you much success and enjoyment with your new SARO product.

SCOPE OF DELIVERY

- 1 Grease separator
- 1 Operating manual

TECHNICAL OVERVIEW

Grease Separator					
Model	FA30	FA50	FA80	FA100	FA250
Item-No.	458-1800	458-1805	458-1810	458-1815	458-1820
Material	Stainless steel				
Füße	4, height-adjustable				
Sonstiges	Odor-proof				
Capacity (gross/net)	30 / 14 Liter	50 / 23 Liter	80 / 42 Liter	100 / 55 Liter	250 / 160 Liter
Dimensions	W 460 x D 287 x H 295 mm	W 563 x T 313 x H 325 mm	W 623 x D 386 x H 385 mm	W 663 x D 413 x H 425 mm	W 813 x D 516 x H 635 mm
Weight (net/gross)	12 / 14 kg	16 / 18 kg	21,5 / 23,5 kg	26 / 29 kg	43 / 48 kg
GTIN [EAN-Code]	4017337070794	4017337070800	4017337070824	4017337070831	4017337070848

SYMBOL EXPLANATIONS



WARNUNG!

Dieses Symbol kennzeichnet Gefahren, die zu Verletzungen führen können. Halten Sie die angegebenen Hinweise zur Arbeitssicherheit unbedingt genau ein und verhalten Sie sich in diesen Fällen besonders vorsichtig.

WARNING!

This symbol indicates hazards that may cause injuries. Always follow the specified safety instructions precisely and exercise extra caution in these situations.

GENERAL INSTRUCTIONS

- Keep this operating manual readily accessible near the device.
- The manufacturer/supplier cannot be held responsible for any damage resulting from failure to observe this operating manual.
- If this operating manual is not observed, the safety of the device is no longer guaranteed.
- When passing the device on to third parties, this operating manual must be included.
- This device must not be operated by children or by persons with limited physical, sensory, or mental capabilities, as they may not recognize the dangers involved in using electrical and/or cooling equipment, which may lead to accidents, fires, explosions, or property damage.
- After unpacking the device, make sure that everything is in perfect condition. If you discover any damage, do not connect the device, but notify your dealer.
- Check whether all components specified in the scope of delivery are present. If not, contact your dealer.
- Keep the original packaging of the device. The device can only be transported safely (e.g. for repair purposes or relocation) in its original packaging. Please note that all parts of the packaging (plastic bags, cartons, Styrofoam parts, etc.) can be hazardous to children and must therefore not be stored in their vicinity.
- If it is not possible to keep the packaging, separate the different packaging materials and take them to the nearest collection point for proper disposal.
- Observe the applicable accident prevention regulations and general safety regulations for the intended area of use.
- The manufacturer/supplier cannot be held responsible for any damage caused by failure to observe this operating manual. In such cases, the safety of the device is no longer guaranteed.

SAFETY INSTRUCTIONS



- Falsche Bedienung und unsachgemäße Behandlung können zu Störungen am Gerät und zu Verletzungen des
- Incorrect operation and improper handling may lead to malfunctions of the device and injuries to the user.
- Observe the applicable accident prevention regulations and general safety regulations for the intended area of use.
- Ensure a secure placement on a dry, non-slip surface that is strong enough to support the weight of the device.
- Connect the device to the water inlet and outlet pipes; make sure all ball valves are properly connected.
- Remove solid waste such as food residues from the wastewater before it enters the grease separator to prevent blockages.



- Keep children and unauthorized persons away from the device to avoid misuse.
- Do not place heavy objects, loads, or liquids on top of the device.
- Do not move the device while it is in operation.
- In case of visible damage, leaks, or malfunctions, stop operation immediately and contact qualified service personnel.
- Repairs must be carried out by qualified specialists using original spare parts.

MODE OF OPERATION

The grease separators are made entirely of stainless steel and are easy to install, operate, and clean.

Grease separators work on the principle that animal fats and vegetable oils (grease) are 10–15% less dense than water and do not mix with water. As a result, fats and oils float on the surface of the water.

When wastewater enters the grease separator, the flow rate is reduced sufficiently so that the wastewater has enough time to cool down and separate into three layers. The grease rises to the top inside the separator and is retained by a system of baffles.

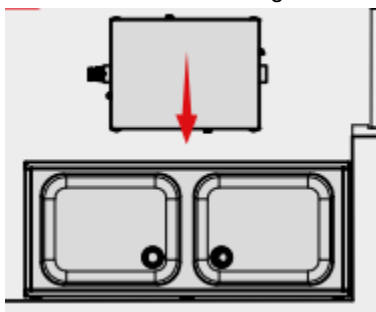
Larger solid particles are retained in the debris collection filter, while smaller particles settle at the bottom. This allows clean water to escape underneath an outlet baffle.



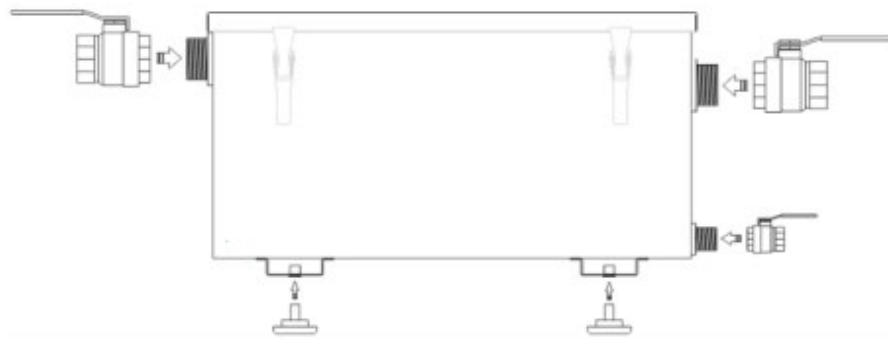
For efficient operation of the grease trap, it is recommended to remove food residues from plates, cutlery, etc. beforehand and to avoid discharging large quantities of used cooking oil directly into the wastewater system. This prevents blockages in the trap and facilitates maintenance as well as trouble-free operation.

DEVICE INSTALLATION

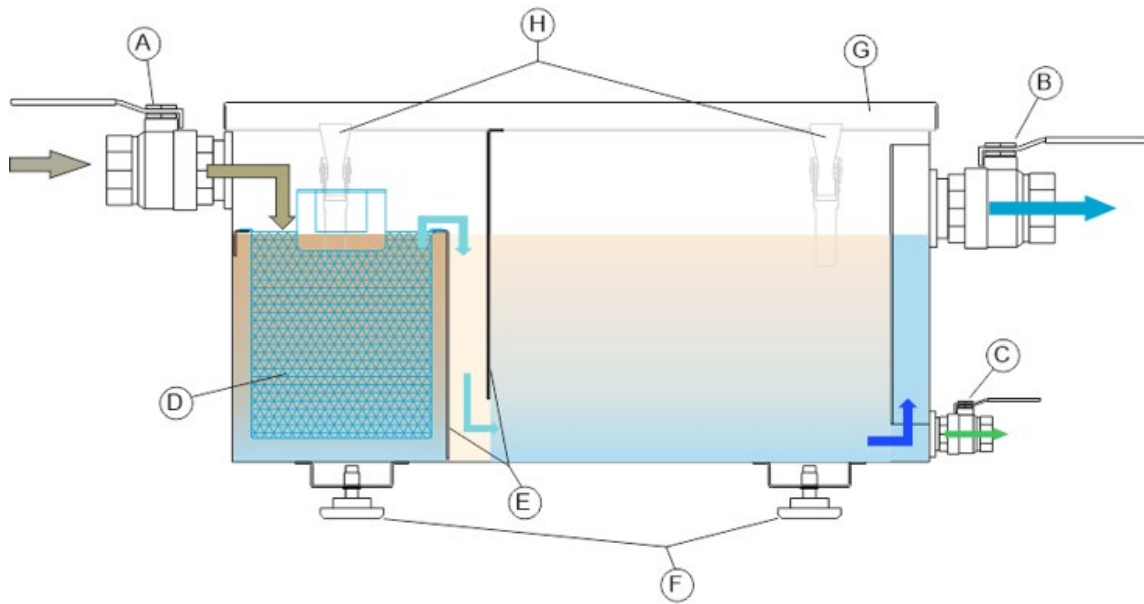
1. Place the unit in the designated location.



2. Screw on the adjustable feet and level the unit.
3. Connect the three ball valves as well as the inlet and outlet pipes.



STRUCTURE AND COMPONENTS



LEGENDE

- A) 1 1/2" ball valve (water inlet)
- B) 1 1/2" ball valve (water outlet)
- C) 3/4" ball valve (drain valve)
- D) Debris collection filter
- E) Grease separator insert
- F) Adjustable feet
- G) Removable cover
- H) Locking clamps

CLEANING AND AMINTENANCE

Over time, fats and solids accumulate. If they remain in the separator for too long, they may escape through the outlet or, in the worst case, block the inlet.

Therefore, regular cleaning is necessary:.

1. Remove the cover.
2. Take out the debris collection filter and dispose of solid waste in the garbage.



3. Empty the contents of the grease separator into a suitable container.



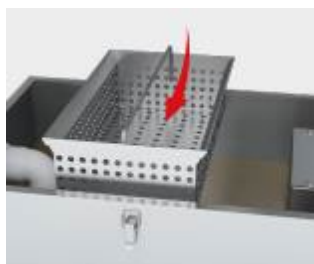
4. Connect the drain valve to the wastewater system and rinse the separator with clean water and grease-dissolving detergents.
5. Clean the debris collection filter separately (dishwasher-safe).



Note: For thorough cleaning, the grease separator and the filter can be washed in an immersion tank with a suitable cleaning agent (if available).

After cleaning:

- Reinsert the debris collection filter.
- Close the cover and fasten the locking clamps.



Cleaning interval: Depending on the amount of wastewater and the size of the separator, usually every 2–4 weeks.

TAKING GREASE SEPARATOR OUT OF OPERATION / STORAGE / TRANSPORT

Clean the device thoroughly inside and outside.

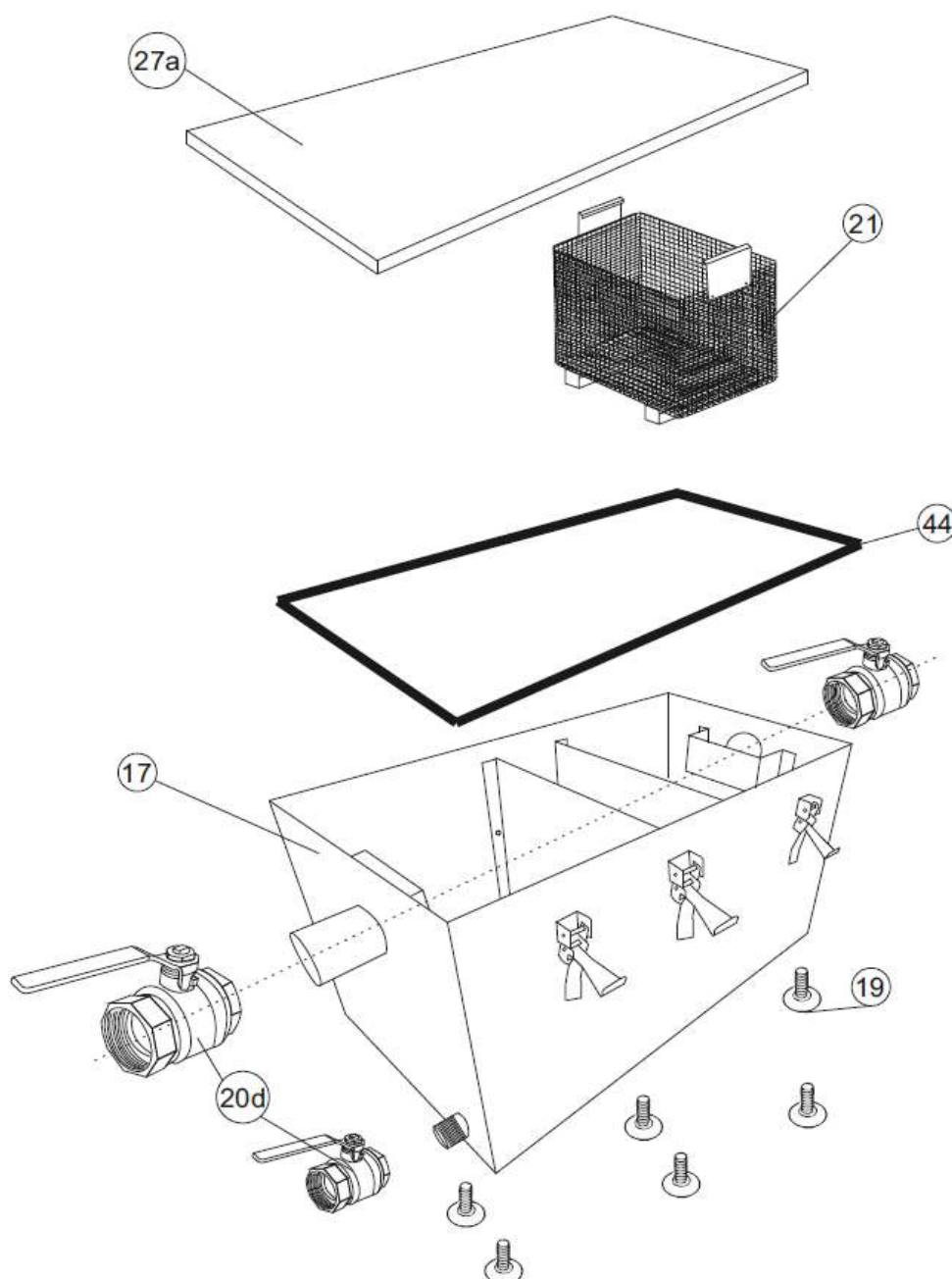
If it is dry and will not be used for a longer period of time, place it in a dry, dust-free, and cool location. Ideally, cover the device or use the original packaging to protect it from damage.

Ensure that the device is secured against pets climbing inside, so they cannot become trapped.

When storing only the packaging material, please note that parts of the packaging, such as plastic bags, cartons, Styrofoam parts, etc., can be dangerous for children if they play with them unsupervised (e.g. risk of suffocation).

For transporting the device, it is best to use the original packaging, as this provides optimal protection against shocks, sharp edges, weather conditions, etc.

EXPLODED VIEW DRAWING



EXPLODED VIEW DRAWING – LEGEND

17	Box	Gehäuse / Box
21	Grease basket	Fettfangkorb
27a	Housing cover	Gehäusedeckel
44	Box rubber sealing	Gehäusedichtung
20d	1"½ Ball Valves	1 ½" Kugelhahn (Wasserzulauf/-ablauf)
20d	¾" Ball Valves	¾" Kugelhahn (Ablasshahn)
19	Adjustable Feet 6	Verstellbare Füße

PACKAGING DISPOSAL



Please separate the packaging materials accordingly and take them to the appropriate collection points for recycling and environmental protection.

Distributor:

SARO Gastro-Products GmbH
Sandbahn 6, 46446 Emmerich am Rhein, Germany
Tel. +49 (0) 2822 9258-0
Fax +49 (0) 2822 18192
E-Mail info@saro.de
Web www.saro.de